



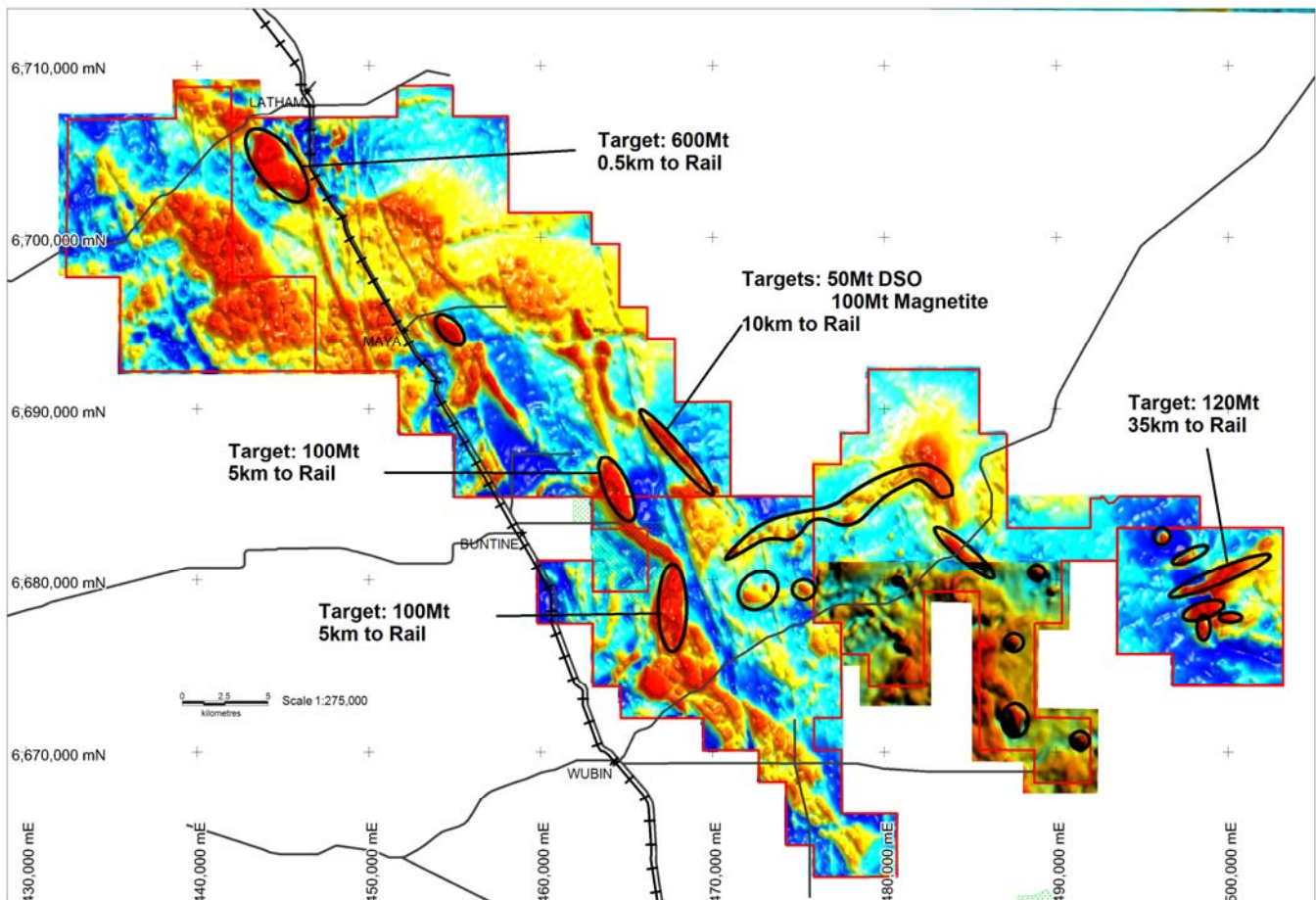
magnetic resources^{NL}



2010 DEVELOPMENTS

SOUTH WEST IRON PROJECT (Magnetic 100%)

- Excellent metallurgical results at Jubuk with 70% iron and less than 1.5% silica recovered.
- Extensive areas of pisolite and hematite/goethite sampled at Wubin.
- 3,000m RC programs at Wubin and Jubuk started in May.



- +2500 million tonne exploration target within iron projects in south west WA. These targets are based on mapping, surface sampling and aeromagnetic interpretation.
- Iron project tenements totalling 5310km² targeting magnetite and DSO including hematite/goethite and pisolite.

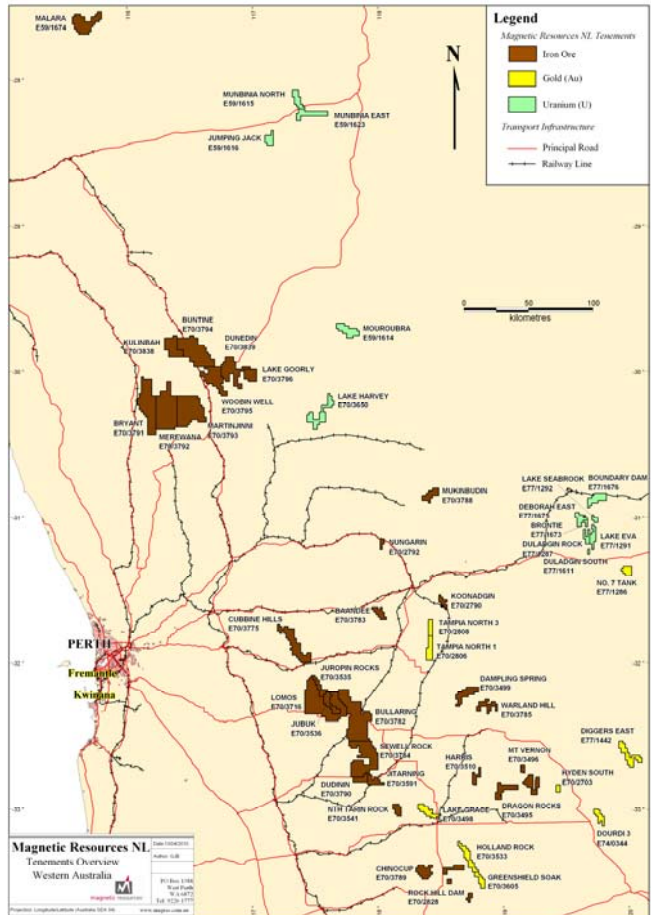


magnetic resources NL



GOLD

- Tampia North (Magnetic 80%). 30km strike length of the Tampia shear zone north of Narambeen with several gold anomalies outlined to date.
- Dourdi (Magnetic 80%). Anomalous gold values up to 15x background identified over a 4km strike associated with an interpreted shear zone near Lake King.
- Holland Rock (Magnetic 100%, Pacific Ore Ltd earning 51%). An 11km-long gold-anomalous corridor identified from geochemical sampling along an interpreted shear zone, along strike from Dominion's Lake Magenta gold prospect



CORPORATE

Shares on Issue	59,991,988
Partly Paid Shares (20c unpaid)	17,700,067
Share Price 24/05/2010	\$0.39

Registered Office

Level 2, 16 Ord Street, West Perth WA 6005
 PO Box 1388, West Perth WA 6872
 Telephone (08) 9226 1777
 Facsimile (08) 9485 2840

ABN 34 121 370 232

For more information on the company visit www.magres.com.au

George Sakalidis
 Managing Director
 Phone (08) 9226 1777
 Mobile 0411 640 337

Roger Thomson
 Technical Director
 Phone (08) 9226 1777
 Mobile 0419 969 183
 Email roger@magres.com.au

The potential quality and grade of the iron ore targets is conceptual in nature and there has been insufficient exploration to define a Mineral Resource and it is uncertain if further exploration will result in the determination of a Mineral Resource